

DISTRICT 11 BOND PROJECTS

RAPIDES PARISH SCHOOL BOARD



OVERSIGHT COMMITTEE MEETING #4

9.21.2023

TIOGA HIGH SCHOOL



TIOGA JUNIOR HIGH SCHOOL



TIOGA ELEMENTARY SCHOOL



MARY GOFF ELEMENTARY SCHOOL



PARADISE ELEMENTARY SCHOOL



BALL ELEMENTARY SCHOOL



AGENDA

1. Introduction
2. Overall schedule update
3. Current project progress report



2023:11

PROJECTS

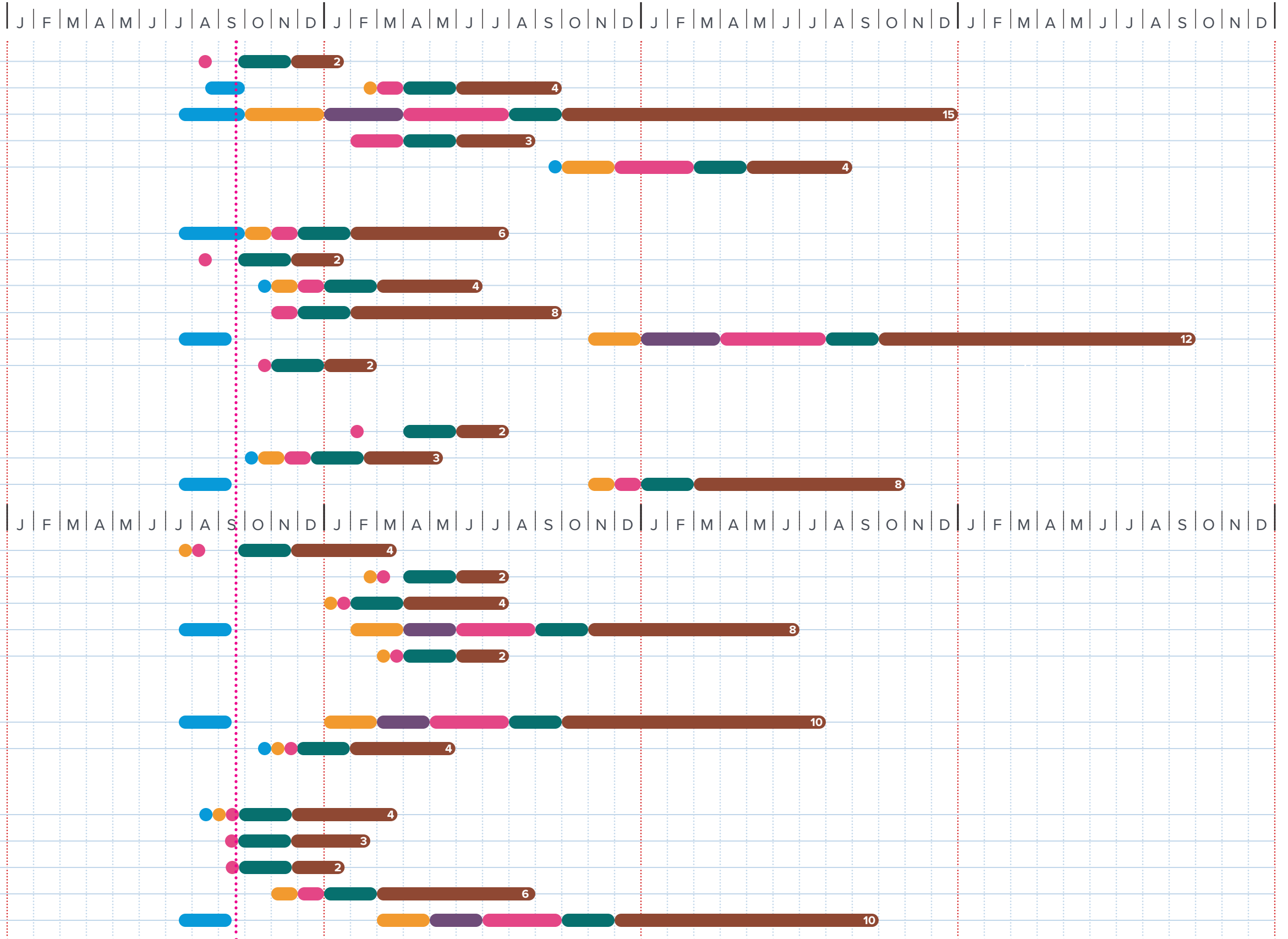
PROGRAMMING SCHEMATIC DESIGN DESIGN DEVELOPMENT CONSTRUCTION DOCUMENTS BIDDING & NEGOTIATION CONSTRUCTION

2023

2024

2025

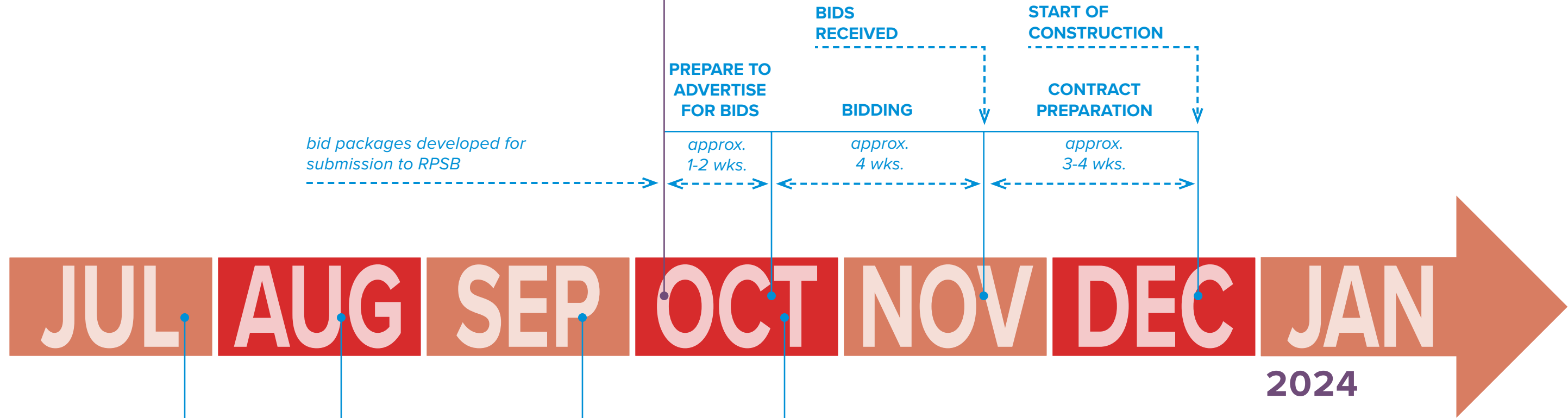
2026



RAPIDES PARISH SCHOOL BOARD MEETING

October 3rd (project bid packages require RPSB approval)

- THS** Lighting at the Front Parking Lot
- TJH** Lighting at Parking Lots
- MGE** Roof Replacement
- BE** Outdoor Pavilions
- BE** Canopy Extension
- BE** Resurface Existing Track



bid packages developed for submission to RPSB

PREPARE TO ADVERTISE FOR BIDS

BIDDING

CONTRACT PREPARATION

approx. 1-2 wks.

approx. 4 wks.

approx. 3-4 wks.

OVERSIGHT MTG. 2

July 20th

OVERSIGHT MTG. 3

August 17th

OVERSIGHT MTG. 4

September 21st

OVERSIGHT MTG. 5

October 19th (scheduled)

SNAPSHOT OF TYPICAL BID TIMELINE

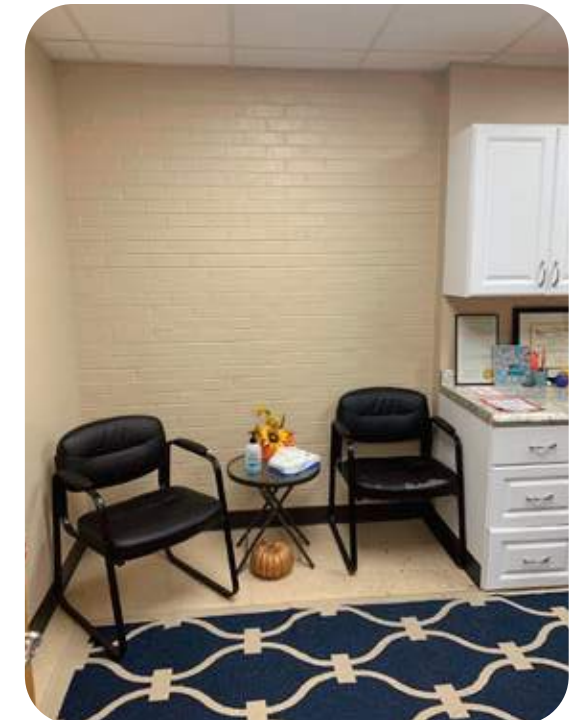
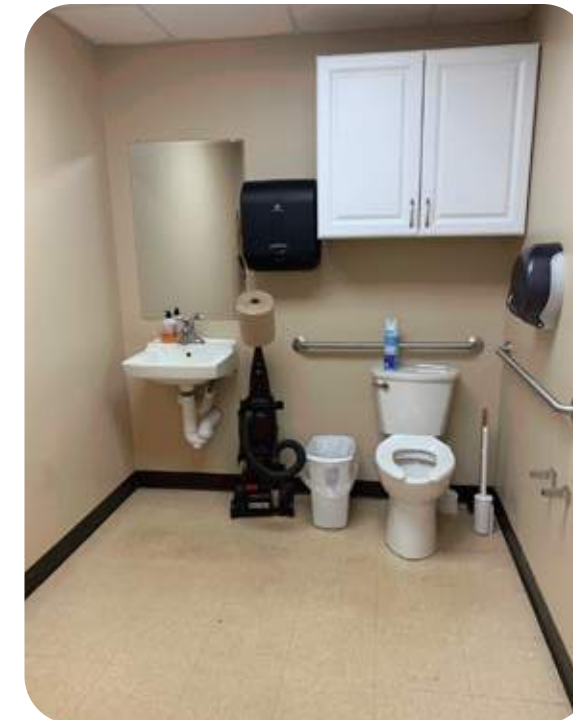
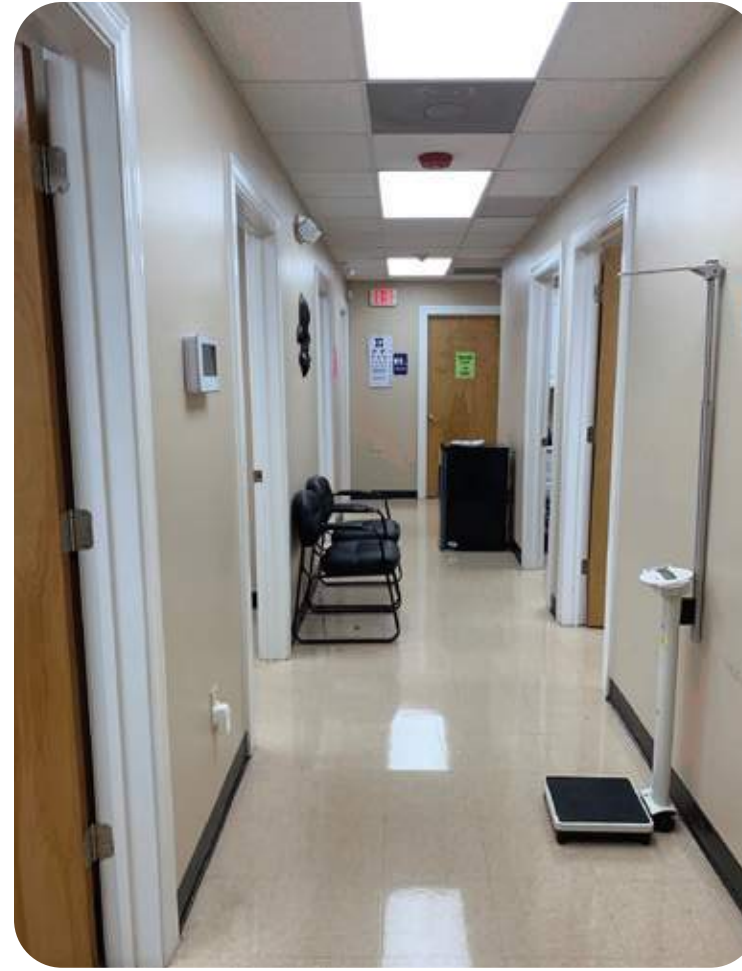
DISTRICT 11 BOND PROJECTS

RAPIDES PARISH SCHOOL BOARD

CURRENT WORK

TRINITY COMMUNITY HEALTH CENTERS

1. Design Team planning ahead for Mary Goff and Paradise health centers
2. Met with Allison Nugent (School-Based Manager) to determine best practices to plan for new health centers



TRINITY COMMUNITY HEALTH CENTERS

DISTRICT 11 BOND PROJECTS

RAPIDES PARISH SCHOOL BOARD

ASHE BROUSSARD WEINZETTLE ARCHITECTS

CURRENT WORK

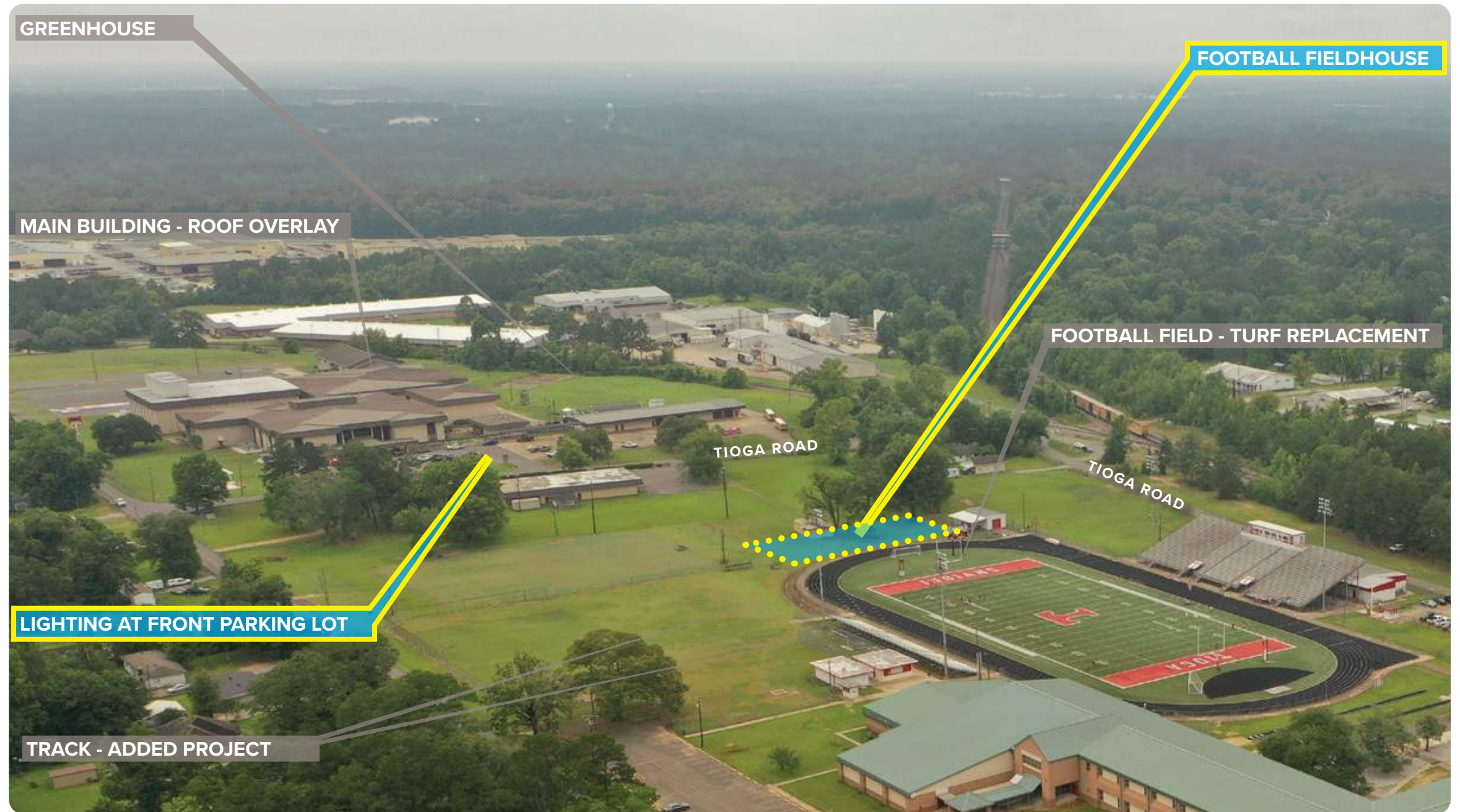
TIOGA HIGH SCHOOL

Lighting at Front Parking Lot

1. On target for bid release after RPSB October meeting

Greenhouse

1. Design Team to adjust greenhouse location, preferred manufacturer options, and proposed project start date based on comments from Debbie McFarland



TIOGA HIGH SCHOOL - CURRENT WORK

DISTRICT 11 BOND PROJECTS

RAPIDES PARISH SCHOOL BOARD

ASHE BROUSSARD WEINZETTLE ARCHITECTS

CURRENT WORK

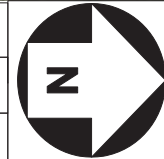
TIOGA HIGH SCHOOL

New Fieldhouse Geotech Report


1. Geotechnical report for south end zone location appears suitable for construction



PLAN OF BORINGS			
PROJECT Tioga High School - Football Fieldhouse, 1207 Tioga Road, Ball, Rapides Parish, Louisiana			
SCALE Not to Scale	DATE 8/28/2023	FILENAME 08-23-118	Rapides Parish School Board



FIELD DATA		LABORATORY DATA								
SOIL SYMBOL	DEPTH (FT)	SAMPLES	N: BLOWS/FT P: TONS/SQ FT	MOISTURE CONTENT (%)	ATTERBERG LIMITS			MINUS NO. 200 SIEVE (%)	DRY DENSITY (Lbs./Cu. Ft.)	COMPRESSIVE STRENGTH (Lbs./Sq. Ft.)
					LL	PL	PI			
	5	N = 19 N = 17 N = 12 N = 16 N = 18		9 10 16 16 18	30 41 41 28	20 23 18 19	10 18 9	91 97 95		
	10	N = 10		34						
	15	N = 15		26	65	27	38	99		
	20	N = 15		27						
	25	N = 15		37	71	28	43	99		
	30	N = 13		29						
Boring Terminated @ 30.0 Feet										

 Geotechnical Testing Laboratory, Inc. 226 Parkwood Drive Alexandria, LA 71301 Telephone: (318) 443-7429		CLIENT: Rapides Parish School Board PROJECT: Tioga High School - Football Fieldhouse LOCATION: Ball, Rapides Parish, Louisiana FILE NO.: 08-23-118 DRILL DATE: 8/25/23
DRILLING METHOD(S): CME 45B, 4.5" I.D. Hollow Stem Auger		DRILLER: C. Deshotel CHECKED BY: K. Gorsha
GROUNDWATER INFORMATION: Water Seepage Noted @ 8.5 Feet While Drilling Water Observed @ 8.0 Feet Upon Completion Boring Walls Collapsed @ 26.5 Feet		SURFACE ELEVATION: Not Determined
DESCRIPTION OF STRATUM		
Very Stiff Yellowish Brown LEAN CLAY (CL) w/silt - stiff, reddish yellow & gray @ 3.5 feet - very stiff @ 5.0 feet 8.5'		
Stiff Red & Gray FAT CLAY (CH) - very stiff @ 14.0 feet - stiff @ 29.0 feet 30.0'		
N - STANDARD PENETRATION TEST RESISTANCE P - POCKET PENETROMETER RESISTANCE		NOTES: See Plan of Borings for Location Stratification and Groundwater Depths Are Not Exact

TIOGA HIGH SCHOOL - CURRENT WORK

DISTRICT 11 BOND PROJECTS

RAPIDES PARISH SCHOOL BOARD

ASHE BROUSSARD WEINZETTLE ARCHITECTS

CURRENT WORK

TIOGA HIGH SCHOOL

New Fieldhouse

1. Aug 25th - Programming Meeting 1
2. Next meeting: Oct 6th



TEAM SUPPORT SPACES



COACHES SUITE

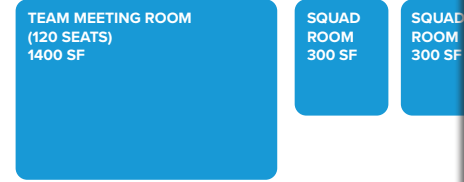


Bond Estimate allocated square footage: 18,395 sf x \$350/sf = \$6,438, 415

Net square footage shown: 15,310 sf (x 1.2 efficiency factor) = 18,372 sf

DISTRICT 11 BOND PROJECTS | T.H.S. FIELDHOUSE PROGRAMMING
RAPIDES PARISH SCHOOL BOARD

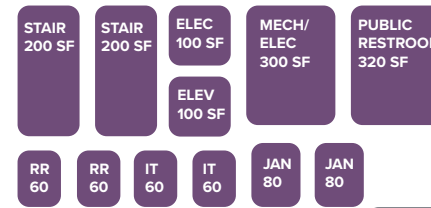
TEAM MEETING SPACES



SHARED SPACES



BUILDING SUPPORT SPACES



1st 2nd either **WEIGHT ROOM** 2700-3000 sf

Notes, Question, & Comments

- Potential sq. ft. savings for some building circulation through weight room. Group agrees that this is worth pursuing
- 16 stations goal. How much clear floor space is ideal? Design team to circle back with coaches to confirm sizes and clear floor space for all equipment to inform design layouts
- Confirm preference to look outside to field through glass. Yes
- 2nd floor spaces overlook weight room? Yes
- Preference for built in platforms
- Any covered outdoor space nearby? Expected that players will come on and off the field through/near weight room - maybe some cover at this entrance
- Coach Cook makes the statement that this is the most important space in the building - needs great access.
- Direct access to the field
- Use of endzone to the end of track/fieldhouse, maybe update lines in turf project for this area to indicate a small practice/kids area field
- Security/monitoring system is okay in weight room (w/ Security First - RPSB vendor)

2,950 sf shown

Adjacent program spaces: locker room

DISTRICT 11 BOND PROJECTS | T.H.S. FIELDHOUSE PROGRAMMING
RAPIDES PARISH SCHOOL BOARD

1st 2nd either **TRAINING & THERAPY SUITE** 500-630 sf

Notes, Question, & Comments

- Will there need to be an office for a trainer? Yes
- Discuss use of room - separation between "wet" and "dry" areas, visibility, access to exterior and interior. THS group generally likes the diagram arrangement, separate trainer office with visibility through suite.
- Number of therapy tables? Diagram looks adequate.
- Number of whirlpools? Two as shown
- Ice machines in room? Yes - larger ice machine here as well, more capacity than what's shown. Design Team will follow up to determine equipment sizes.
- Circulation point for student managers (2-3) good spot that isn't just the locker room
- Potential need for stationary bike(s)
- After discussion, a separate small storage room is needed: water supplies, larger ice machine, 2 water cows (deluxe hydration device), janitor sink, open wire shelving, exterior access, floor drain - nothing "pretty"

500 sf shown (130 sf of office)

Adjacent program spaces: coaches' suite? lobby?

ASHE BROUSSARD WEINZETTLE ARCHITECTS

1st 2nd either **HEAD COACH OFFICE** 350-400 sf

Notes, Question, & Comments

- Private restroom with shower? Yes
- Confirm large meeting room table in room. 8 chairs? Yes
- What's on the walls? Whiteboards, monitors. Yes
- Consideration of windows looking out to the field and into weight room area, building interior.

ASHE BROUSSARD WEINZETTLE ARCHITECTS

1st 2nd either **MULTI-PURPOSE / LOUNGE AREA** 1,500 sf

Notes, Question, & Comments

- 1,500 sf is the placeholder which is approaching 10% of the total building sf - discuss capacity, furnishings, etc. with next item
- This area has been discussed to provide a variety of functions: 1) Club-style Lounge for designated Tioga supporters to watch the game w/catering support. 2) Players quiet lounge for studying 3) meeting room space for community/business groups
- A separate kitchen program space was previously discussed - is food being prepared in an enclosed room or is this a self-serve catering style counter with a sink that opens to the lounge area?
- Would it make any sense to locate the programmed break room near this area? Yes, serving bar acts as break room
- Confirm/discuss: views to field (discuss distance), connection to players - cheer them as they come in & out of the fieldhouse, overlooks the weight room? Yes on all, distance not a problem
- For track too
- Near head coach office
- Feed team on Friday night here, assortment of seating bar-tops, set up tables, some soft seating - players will also eat in weight room area
- Serving bar becomes smoothie bar in off-season, big sink, dishwasher, big refrigerator
- Monitors in room to see game feed

Adjacent program spaces: weight room below? lobby?

DISTRICT 11 BOND PROJECTS | T.H.S. FIELDHOUSE PROGRAMMING
RAPIDES PARISH SCHOOL BOARD

ASHE BROUSSARD WEINZETTLE ARCHITECTS

1st 2nd either **TEAM MEETING ROOM (120 SEATS)** 1,400 sf

Notes, Question, & Comments

- Blue sky discussion: what mix of team & squad meeting rooms would best serve the THS football operations?
- Example indicates 120 flip down seats on tiered risers, large screens at the front of the room. What is the reaction to this type of arrangement? THS likes this arrangement
- Does this type of room have potential additional uses for THS. or the Tioga community? Yes, for inservice and other uses
- Coach Cook and THS group started discussion about preference for two rooms with 40-50 player capacity then settled on: 2 rooms, one large (80) one small (40), with big screen
- Durable seats - easily cleaned, not easily damaged
- Likely place to go at halftime
- Needs good access from field

1,400 sf shown (120 seats)

Adjacent program spaces: squad rooms, locker room, public entry?

DISTRICT 11 BOND PROJECTS | T.H.S. FIELDHOUSE PROGRAMMING
RAPIDES PARISH SCHOOL BOARD

ASHE BROUSSARD WEINZETTLE ARCHITECTS

TIOGA HIGH SCHOOL - CURRENT WORK

DISTRICT 11 BOND PROJECTS
RAPIDES PARISH SCHOOL BOARD

ASHE BROUSSARD WEINZETTLE ARCHITECTS

CURRENT WORK

TIOGA JUNIOR HIGH SCHOOL

Lighting at Parking Lots

1. On target for bid release after RPSB October Meeting



LOCKER ROOM RENOVATIONS

SECURING GOLF CART STORAGE

MULTI-PURPOSE BUILDING

- Further evaluate for Spirit Group Space or Girls Gym
- Storage

BUS STORAGE BUILDING

INTERIOR UPGRADES - STAFF LOUNGE & MAIN OFFICE

ADD. ALT. - LIGHTING AT PARKING

LIGHTING AT PARKING LOTS

TIOGA JUNIOR HIGH SCHOOL - CURRENT WORK

DISTRICT 11 BOND PROJECTS
RAPIDES PARISH SCHOOL BOARD

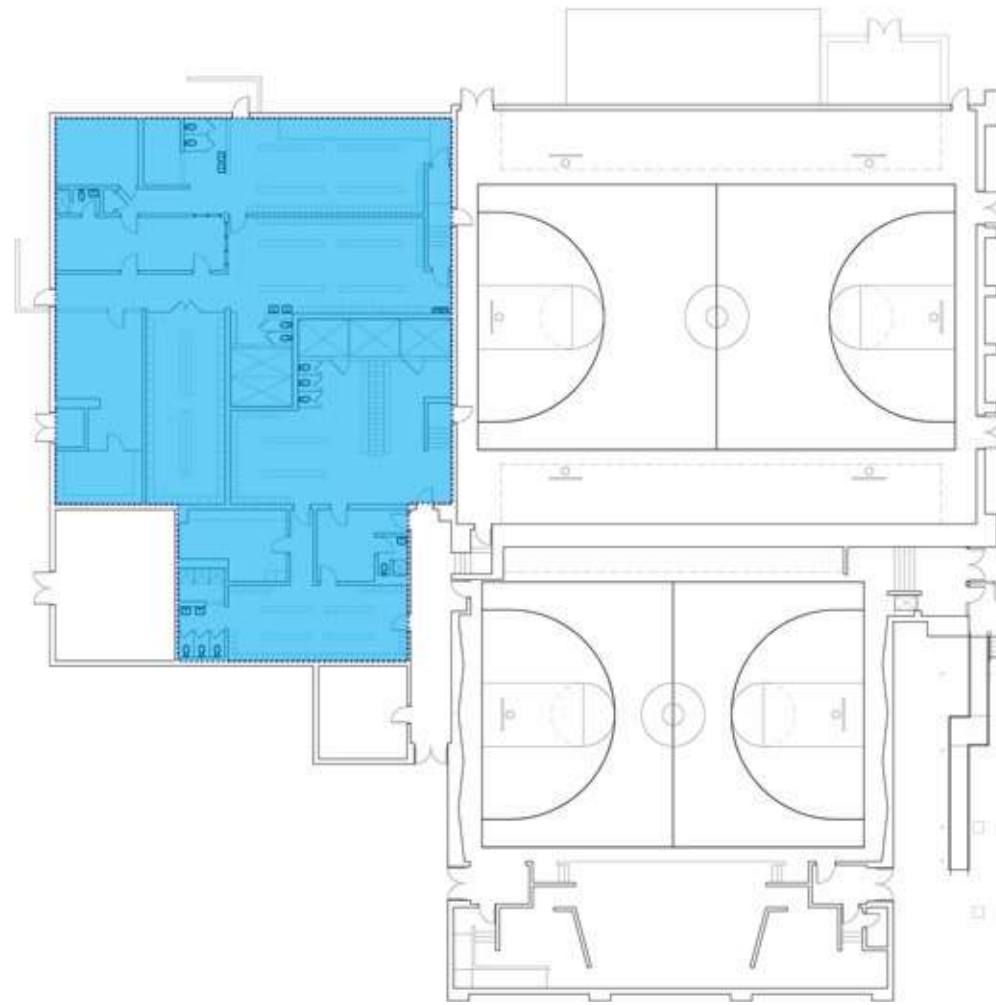
ASHE BROUSSARD WEINZETTLE ARCHITECTS

CURRENT WORK

TIOGA JUNIOR HIGH SCHOOL

Locker Room Renovations

1. September 11th meeting on site with Principal Landry and coaches
2. Next steps: construction drawings and finish selections - anticipate bid release after RPSB December meeting



TIOGA JUNIOR HIGH SCHOOL - CURRENT WORK

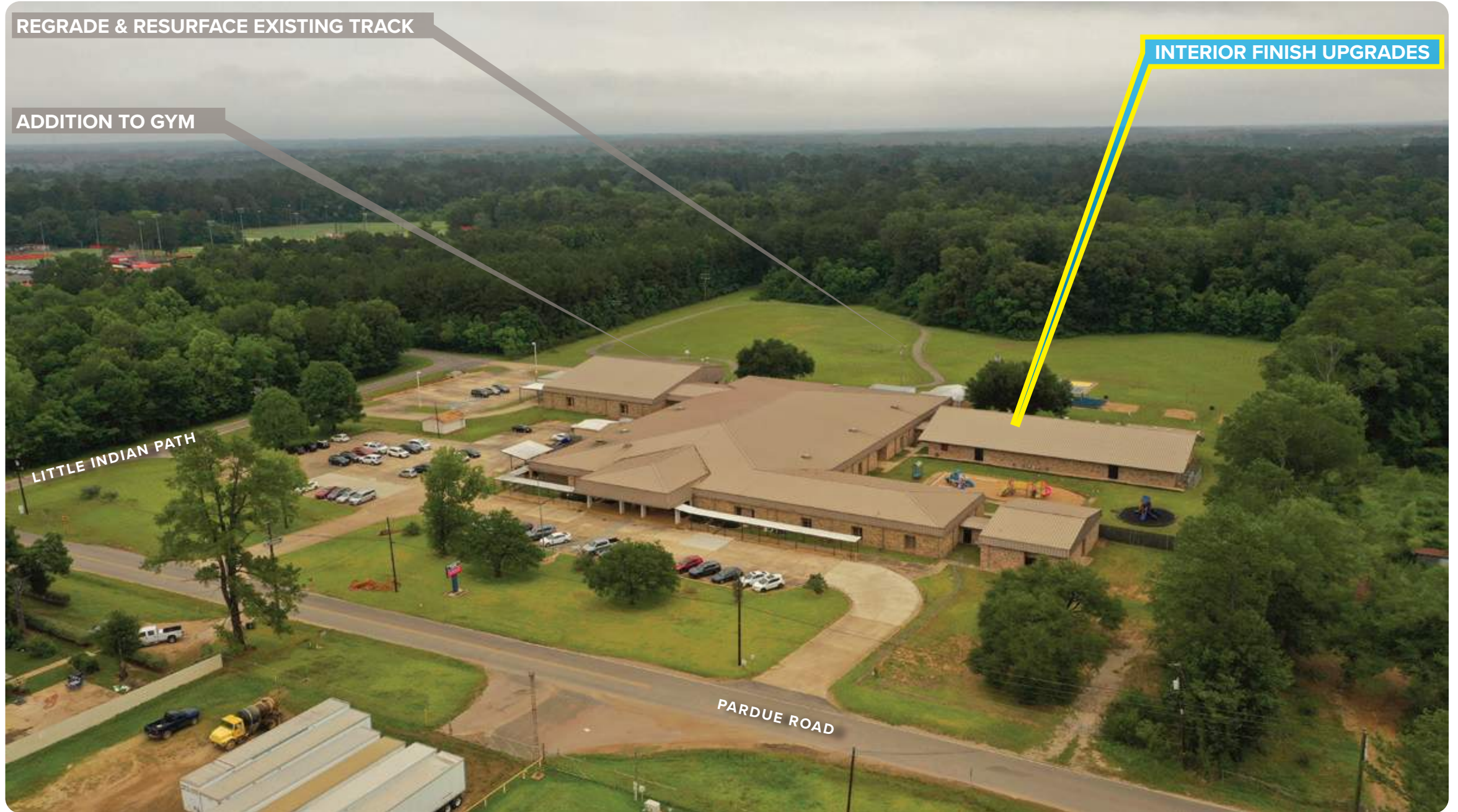
DISTRICT 11 BOND PROJECTS

RAPIDES PARISH SCHOOL BOARD

ASHE BROUSSARD WEINZETTLE ARCHITECTS

CURRENT WORK

TIOGA ELEMENTARY SCHOOL



TIOGA ELEMENTARY SCHOOL - CURRENT WORK

DISTRICT 11 BOND PROJECTS
RAPIDES PARISH SCHOOL BOARD

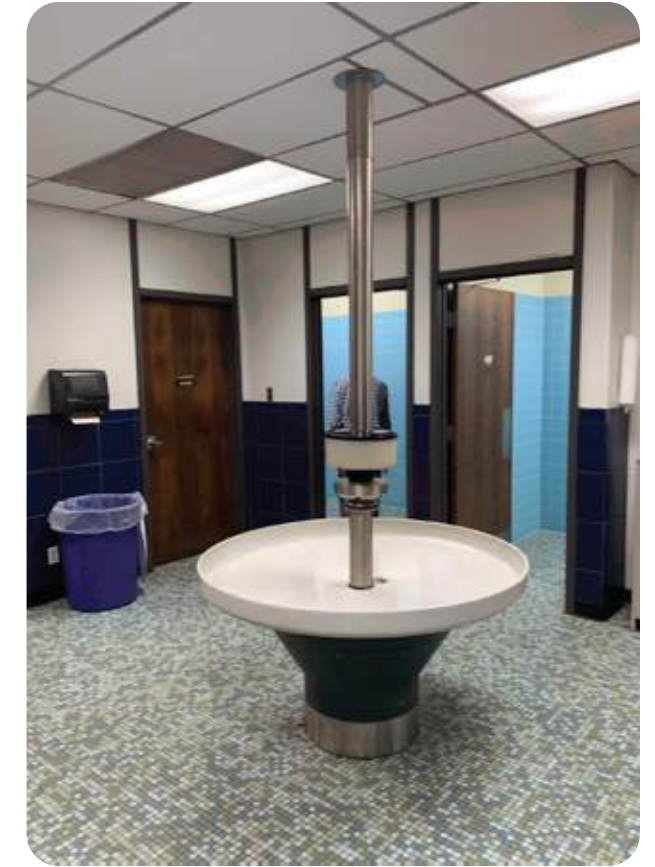
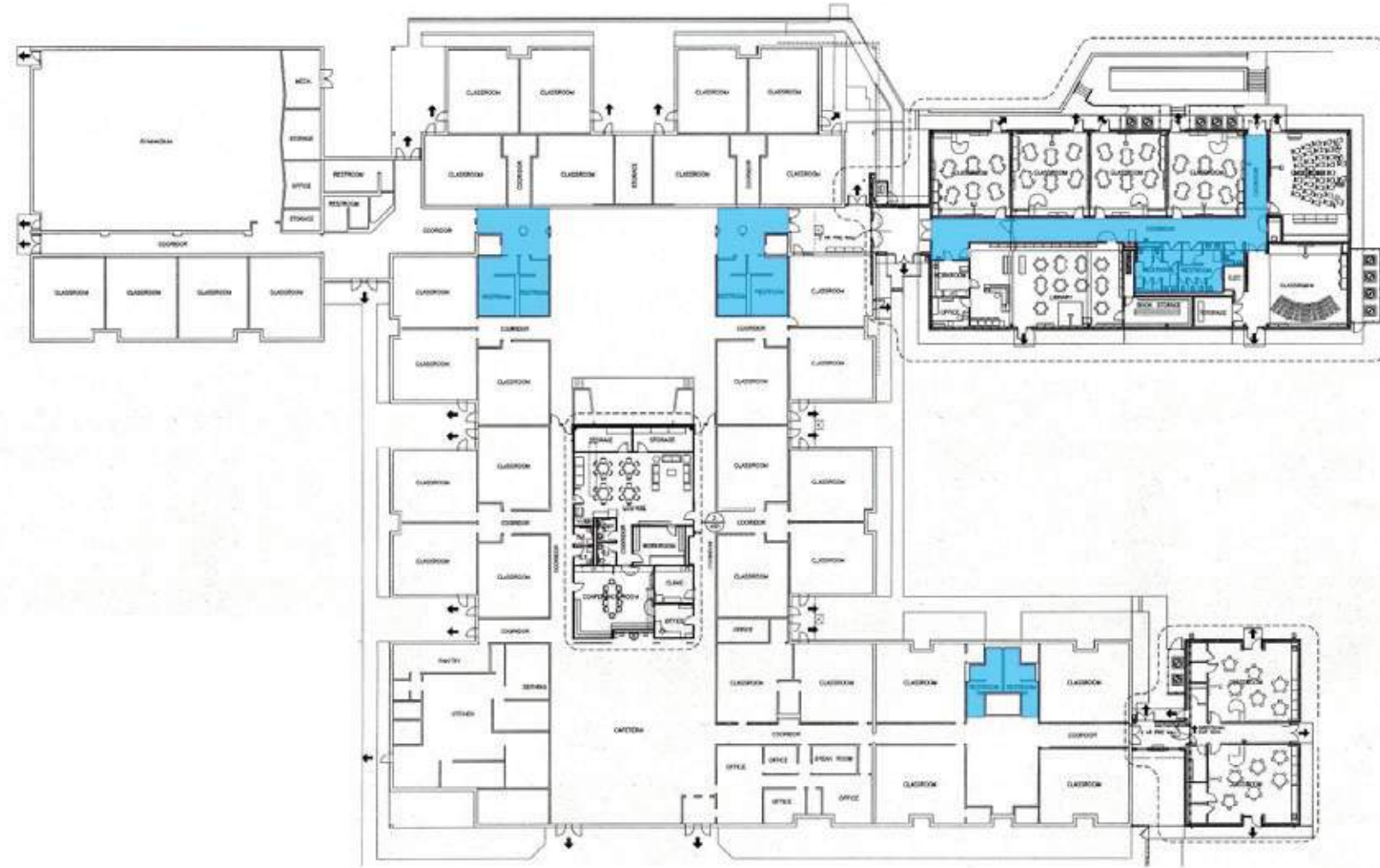
ASHE BROUSSARD WEINZETTLE ARCHITECTS

CURRENT WORK

TIOGA ELEMENTARY SCHOOL

Interior Finish Upgrades

1. Meeting is scheduled with Principal Furniss to discuss finishes and phasing



TIOGA ELEMENTARY SCHOOL - CURRENT WORK

DISTRICT 11 BOND PROJECTS

RAPIDES PARISH SCHOOL BOARD

ASHE BROUSSARD WEINZETTLE ARCHITECTS

CURRENT WORK

MARY GOFF ELEMENTARY SCHOOL



MARY GOFF ELEMENTARY SCHOOL - CURRENT

DISTRICT 11 BOND PROJECTS
RAPIDES PARISH SCHOOL BOARD

ASHE BROUSSARD WEINZETTLE ARCHITECTS

CURRENT WORK

PARADISE ELEMENTARY SCHOOL



- *MULTI-PURPOSE BUILDING - SITE A
 - Band Room
 - Art Room/Meeting Space
 - Trinity Community Health Center

*MULTI-PURPOSE BUILDING - SITE B

ROOF REPLACEMENT



PARADISE ELEMENTARY SCHOOL - CURRENT WORK

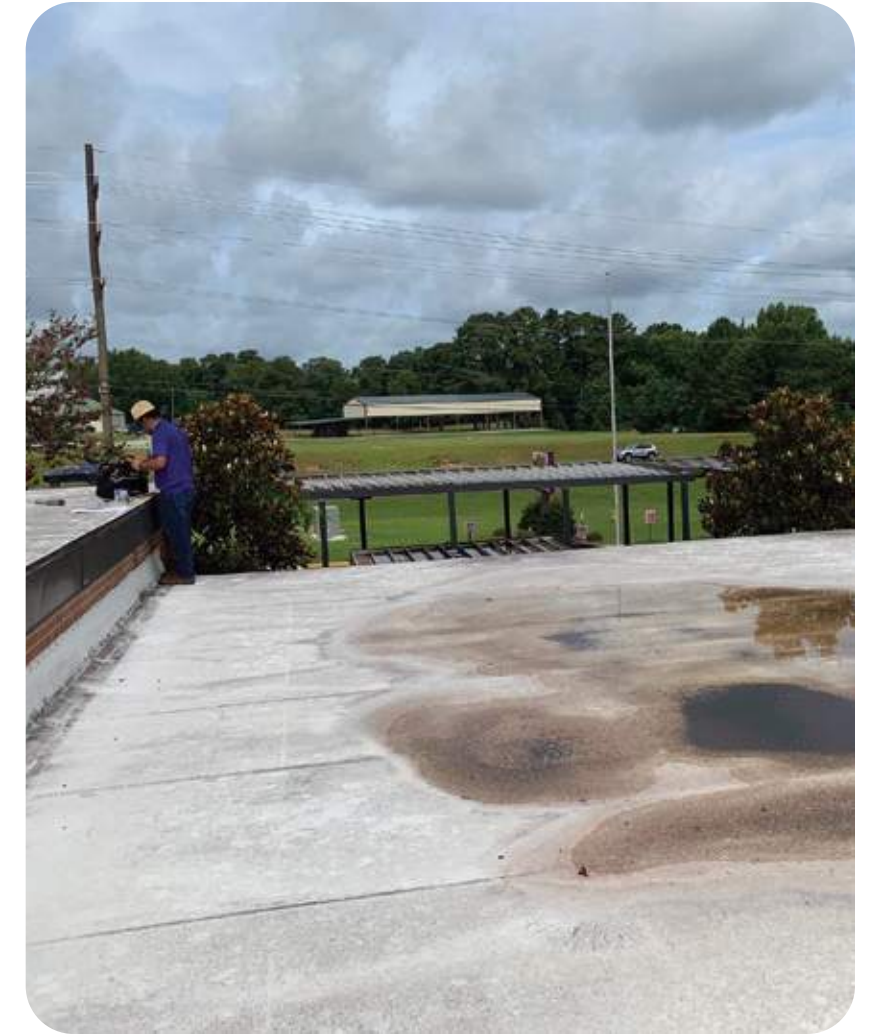
DISTRICT 11 BOND PROJECTS
RAPIDES PARISH SCHOOL BOARD

CURRENT WORK

PARADISE ELEMENTARY SCHOOL

Roof Replacement

1. Discuss preferred roof type - TPO over tapered insulation or steep slope metal roof on framing
2. Discuss budget implications of preferred option
3. Design Team obtained Environmental Report, identifies locations of asbestos containing materials for roofing contractor to remove



2021 ASHERA THREE-YEAR ASBESTOS REINSPECTION FORM

Owner: Rapides Parish School Board Location: Paradise Elementary School Inspector(s): Jerry Heidecker

SHA	Material Description	Sample ID	Sample Date (or P&C#)	Friable Yes/No	Cont. Change Yes/No	Asbestos Yes/No	Potential for Disturbance H, M, L, ?	Cont'd	Damage Type	Damage Severity	ASHERA Damage Category	Material Basis	Removal Priority
RT	Black Roof Top (Vulc)	P-4	07/20/09	N	N	N	L	D	N	N	ND	1	?
CT	Dark Brown Ceramic Tile/Glue	P-5	07/20/09								REMOVED		
CA	Multi-Colored Terrazzo Panels	1135	06/21/09								REMOVED		

Note: One note box a material used (MART) removed from site area



PARADISE ELEMENTARY SCHOOL - CURRENT WORK

DISTRICT 11 BOND PROJECTS

RAPIDES PARISH SCHOOL BOARD

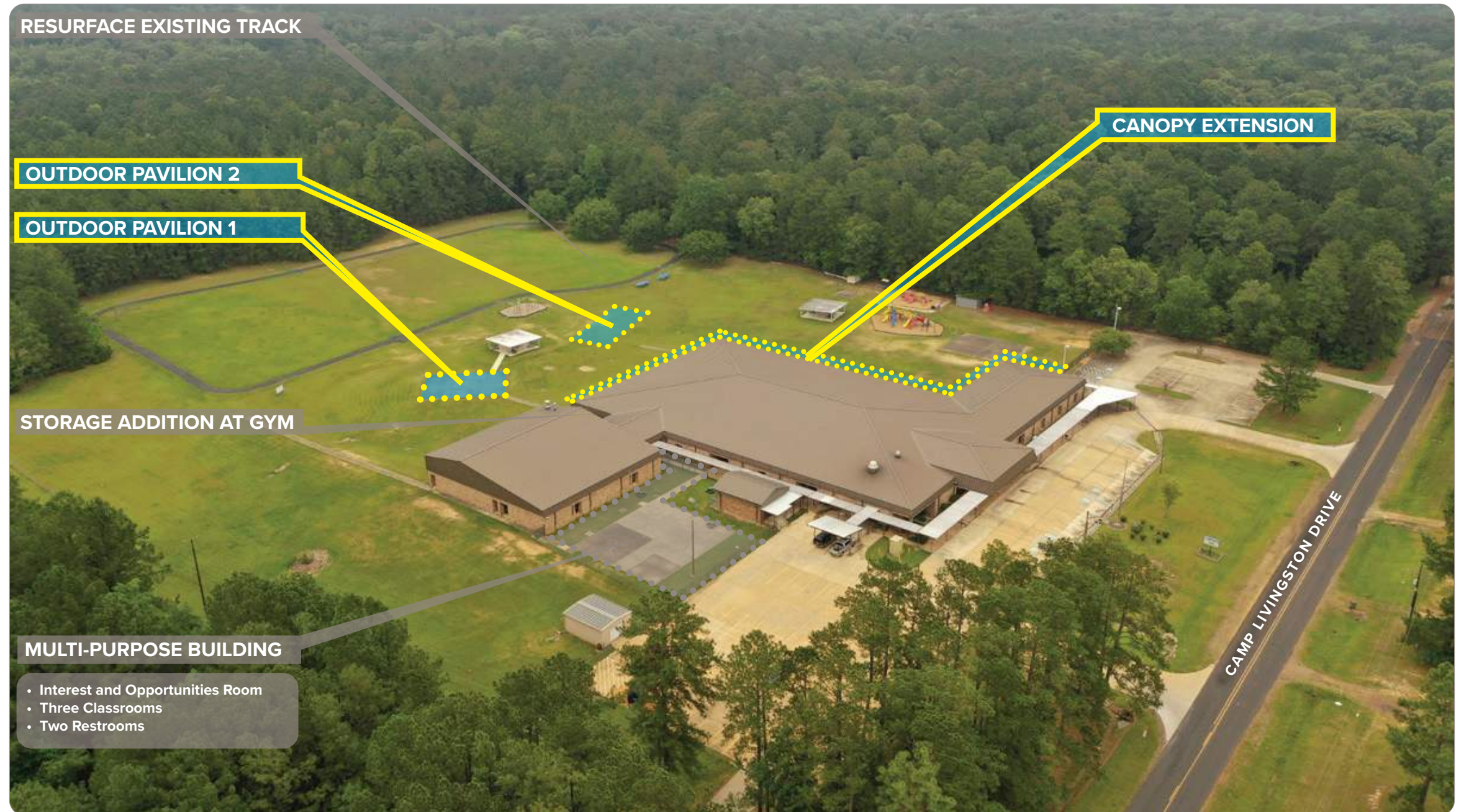
ASHE BROUSSARD WEINZETTLE ARCHITECTS

CURRENT WORK

BALL ELEMENTARY SCHOOL

Pavilions

1. Civil engineering consultant is reviewing site conditions, details, and slab design
2. On target for bid release after RPSB October Meeting



BALL ELEMENTARY SCHOOL - CURRENT WORK

DISTRICT 11 BOND PROJECTS

RAPIDES PARISH SCHOOL BOARD

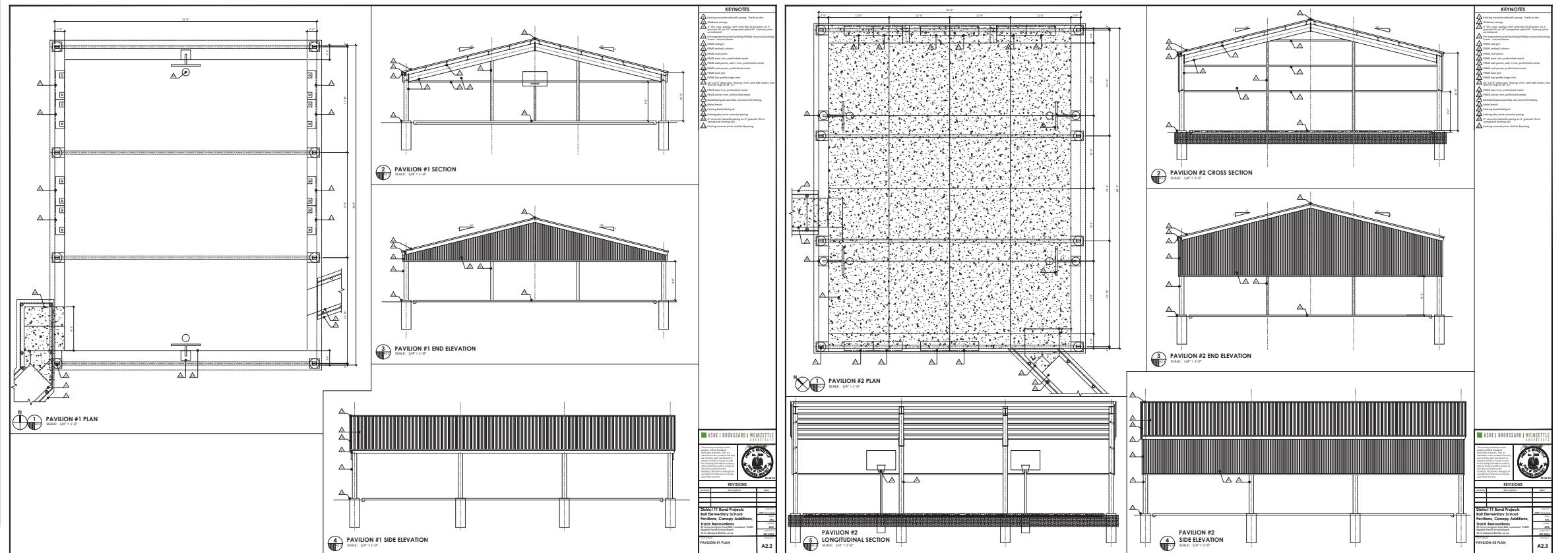
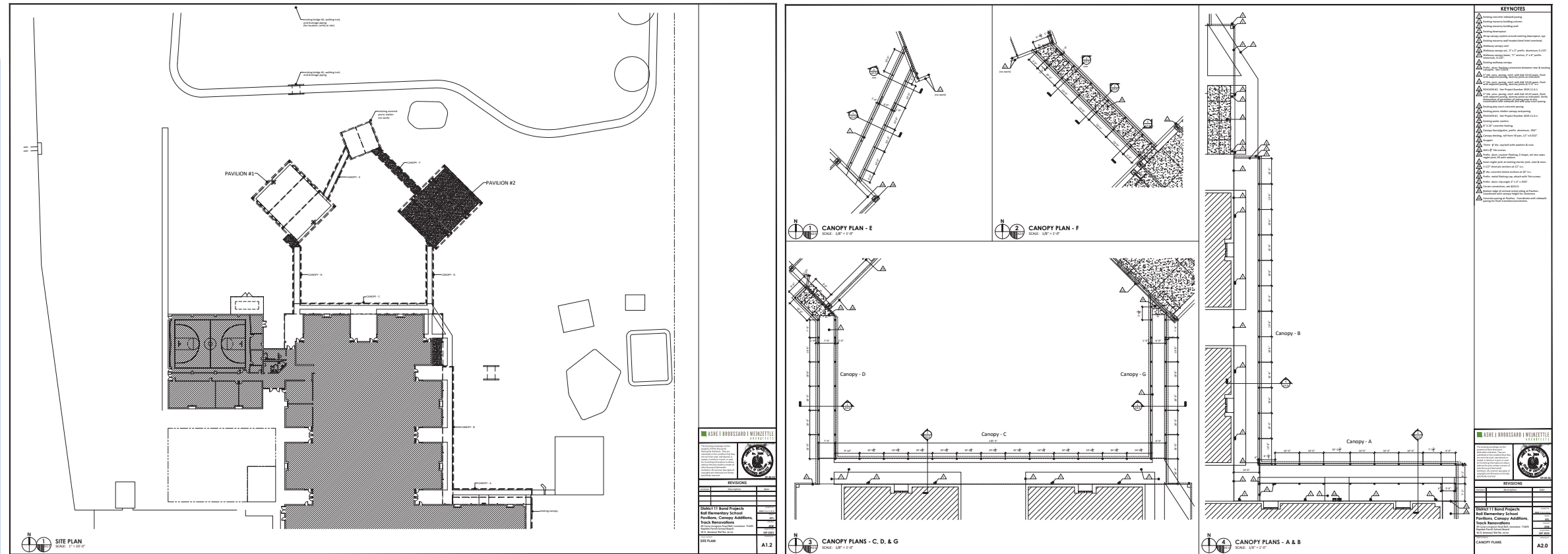
ASHE BROUSSARD WEINZETTLE ARCHITECTS

CURRENT WORK

BALL ELEMENTARY SCHOOL

Canopy Extension

1. September 20th meeting on site with Principal Roberts and Coach Perkins
2. On target for bid release after RPSB October Meeting



BALL ELEMENTARY SCHOOL - CURRENT WORK

DISTRICT 11 BOND PROJECTS

RAPIDES PARISH SCHOOL BOARD

ASHE BROUSSARD WEINZETTLE ARCHITECTS



next meeting:
OCTOBER 19th

**EVERYONE
DESERVES
GOOD
ARCHITECTURE.**